

MARINER SANDS PLAT NO. 3

- LEGEND**
- Denotes (P.C.P.) Permanent Control Point
 - Denotes (P.R.M.) Permanent Reference Monument
 - (R) Denotes Radial Line
 - COO Denotes Curve Data as shown in Curve Table
 - TOO Denotes Line as shown in Tangent Table
 - G.C. Denotes Golf Course Area
 - U.E. Denotes Utility Easement
 - D.E. Denotes Drainage Easement
 - F.R. Denotes Future Right of Way
 - M.E. Denotes Maintenance Easement

I, Louise V. Isaacs, Clerk of the Circuit Court of Martin County, Florida, hereby certify that this plat was filed for record in Plat Book 9, Page 18, Martin County, Florida, public records this 27th day of October, 1982.

LOUISE V. ISAACS, CLERK
CIRCUIT COURT
MARTIN COUNTY, FLORIDA

BY: _____
Deputy Clerk

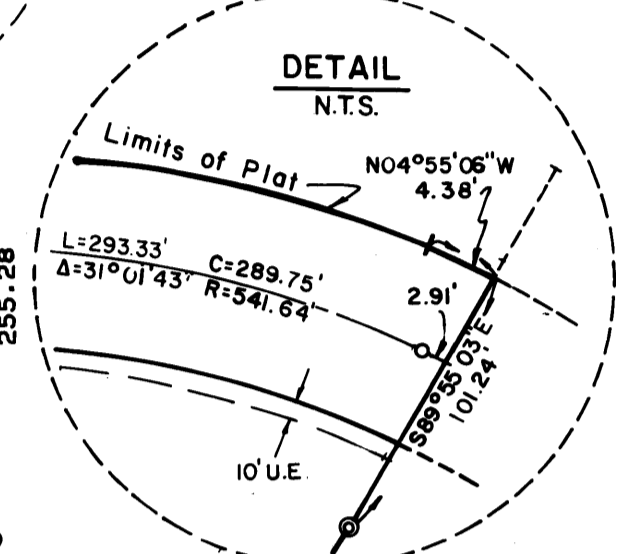
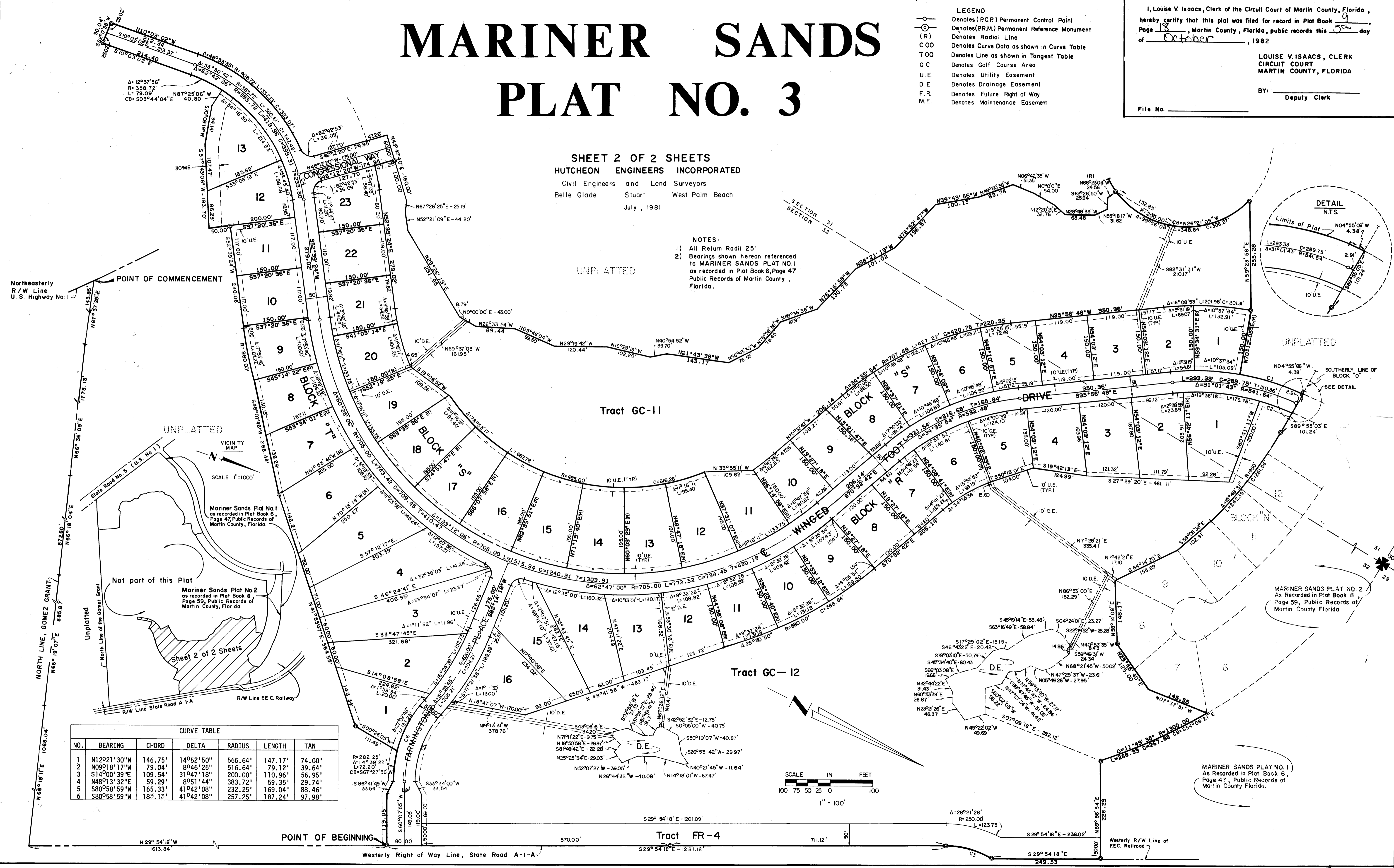
File No. _____

SHEET 2 OF 2 SHEETS
HUTCHEON ENGINEERS INCORPORATED
Civil Engineers and Land Surveyors
Belle Glade Stuart West Palm Beach
July, 1981

- NOTES:**
- 1) All Return Radii 25'
 - 2) Bearings shown hereon referenced to MARINER SANDS PLAT NO. 1 as recorded in Plat Book 6, Page 47 Public Records of Martin County, Florida.

CURVE TABLE

NO.	BEARING	CHORD	DELTA	RADIUS	LENGTH	TAN
1	N120°21'30"W	146.75'	14°52'50"	566.64'	147.17'	74.00'
2	N09°18'17"W	79.04'	8°46'26"	516.64'	79.12'	39.64'
3	S14°00'39"E	109.54'	31°47'13"	200.00'	110.96'	56.95'
4	N48°13'32"E	59.29'	8°01'44"	363.72'	59.35'	29.74'
5	S80°58'59"W	165.33'	41°42'08"	232.25'	169.04'	88.46'
6	S80°58'59"W	183.13'	41°42'08"	257.25'	187.24'	97.98'



Northeasterly R/W Line U.S. Highway No. 1

POINT OF COMMENCEMENT

UNPLATTED

VICINITY MAP

SCALE 1"=1000'

Mariner Sands Plat No. 1 as recorded in Plat Book 6, Page 47, Public Records of Martin County, Florida.

Mariner Sands Plat No. 2 as recorded in Plat Book 8, Page 59, Public Records of Martin County, Florida.

Not part of this Plat

Sheet 2 of 2 Sheets

R/W Line State Road A-1-A

R/W Line F.E.C. Railway

POINT OF BEGINNING

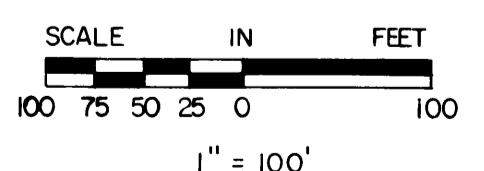
POINT OF BEGINNING

UNPLATTED

Tract GC-11

Tract GC-12

Tract FR-4



UNPLATTED

SOUTHERLY LINE OF BLOCK 'O'

SEE DETAIL

MARINER SANDS PLAT NO. 2 as recorded in Plat Book 8, Page 59, Public Records of Martin County Florida.

MARINER SANDS PLAT NO. 1 as recorded in Plat Book 6, Page 47, Public Records of Martin County Florida.

Westerly R/W Line of F.E.C. Railroad